

CARVICO / JL S/S 2017 COLLECTION PRESS RELEASE

Our S/S collection perfectly blends style and talent with the bold spirit, strength and simplicity encompassing the person it was inspired by.

It mirrors the lifestyle conceived by Carvico and Jersey Lomellina which is increasingly focused on the use of their extraordinary and versatile fabrics.



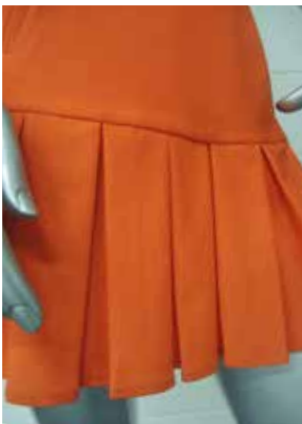
The FREE & EASY mood targets a young audience who loves wearing sporty and casual outfits every day.

The menswear color palette is comprised of khaki and indigo, paired with beige and taupe as well as a range of other summery nuanced shades. An additional peach pink hue is added to the palette for womenswear designs.

The garment-dyeing process produces a casual yet modernized mood. Bonded and non bonded fabrics ensure high performances and perfectly suit this urban casual collection.

The FUNCTIONAL TRAVEL mood celebrates a functional, futuristic and cosmopolitan style. Globetrotters and travelers alike will fall for this new concept of clothing featuring trench coats and trousers with clean but dynamic geometric lines, impalpable, featherweight effect fabrics for women and alternatively, more structured ones for men.

This new concept which is conveyed by the intelligent make up of the fibers used to manufacture these comfortable, pleasant to wear, unique fabrics.



The ON THE GREEN mood hints at the world of golf with sporty items and techno-fabrics which make outfits look more dynamic. Jersey Lomellina reinvents piquet, introducing a softer, more fluid hand-feel.

Carvico's go to choice is Vita, an extremely versatile fabric and a must-have in any active collection.



The INFORMAL CITY mood focuses on minimalism referring to both structures and seams, leaving more space for a set of fabrics to tell the story behind the philosophy of these Brit-style garments.

We are talking about a set of simple and informal garments with an extraordinary allure and classiness. The dynamic jacket features a check printed pattern, whereas both man's shirts and the pair of women's trousers are characterized by micro-geometric patterns.

In this case the color range is more spring-like, comprised of several pastel tones to open the new season in style.



The PARTY mood has a neo-romantic feel that takes life in the garments made from VITA. This fabric is a high-performer both when used to sculpt the silhouette with ergonomic lines, and when it is used to create garments inspired by the '50s, to create pleating effects, to suit laser-cut items, and to construct glamorous pieces with rich embroideries.

Colors light up dresses in a kaleidoscope of printed patterns with lime, raspberry red and turquoise shades. Water color nuances contrast with darker or brighter colors and black & white trimmings.

PREMIERE VISION
STAND 6E16 6F13 CA /JL

PARC DES EXPOSITIONS
ZAC PARIS NORD 2
93420 VILLEPINTE

Carvico S.p.A.
Tel +39 035 780538
r.barelli@carvico.com
carvico.com